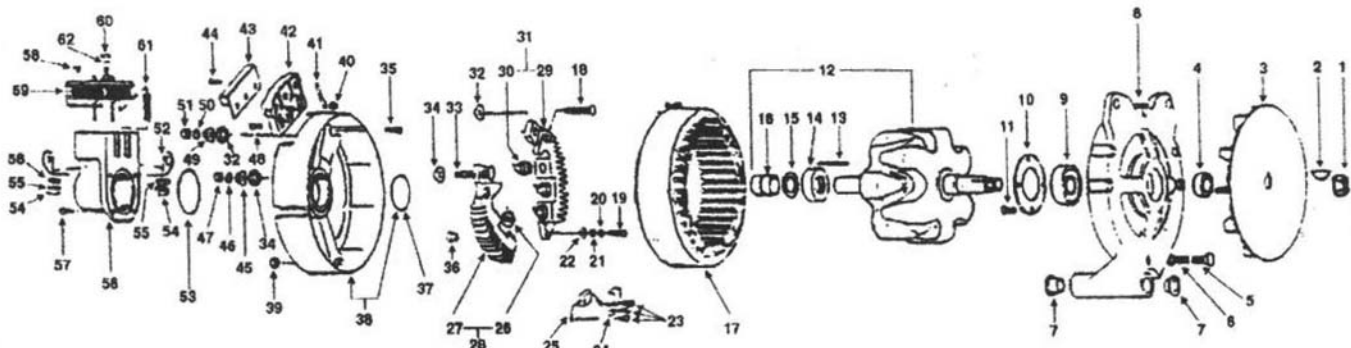


GROUP:	"R-1"
FORM:	3425-1071
FILE:	Alternator Parts List Section
DATE:	February, 1995

PRODUCTS COVERED

MODEL	VOLTS	AMPS
7700JA	14	130
7702JA	14	130
7704JA	14	130
7705JA	14	130
7706JA	14	165
7709JA	14	130
7710JA	14	165
7711JA	14	165



Parts Not Common

Ref No.	Description	Qty	7700JA	7702JA	7704JA	7705JA	7706JA	7709JA	7710JA	7711JA
1	Nut, 5/5-18 Hex. Fl. Lock	1	76985	76985	76985	74107	74107	74107	74107	74107
3	Fan Assembly	1	75594	75594	75594	75633	75633	75633	75633	75633
4	Spacer, Fan	1	59225	59225	59225	59324	59324	59324	59324	--
7	Insert, Mounting	2	73651	73651	73651	--	--	73743	73741	--
8	Housing, D.E.*	1	71177	71142	71142	77773	77773	96842	96842	101154A
9	Bearing, 305*	1	76262	76262	76262	57166	57166	57166	57166	57166
12	Rotor & Slip Ring Assy*	1	77794	77794	77794	79397	95022	79397	95022	95022
17	Stator Assembly*	1	77792	77792	77792	77792	97078	7792	97078	97078

Parts Common

Ref. No.	Part No.	Qty.	Description	Ref. No.	Part No.	Qty.	Description
2	6399	1	Key, Woodruff No. 8	22	52066	2	Washer, Insulation
5	59972	3	Screw, 10-32 x 3.62 Hex. Hd. St.	23	73543	3	Screw, 6-32 Hex. S Tap
6	75451	3	Washer, Belleville	24	73760	1	Clamp (See Note 1)
10	59234	1	Retainer, Bearing	25	96545	1	Capacitor Assy. (See Note 1)
11	58754	4	Screw, 10-32 x .44 Fl Hd. S Tap	28	79193*	1	Rectifier Assy. (POS)
13	30300	1	Wedge, Slot	31	79415*	1	Rectifier Assy. (NEG)
14	26853*	1	Bearing, 203	32	73545*	2	Bushing, Insulation
15	57626	1	Washer, Insulation	33	78336*	1	Screw, Terminal
16	57462	1	Slip Ring Assembly	34	73546	2	Bushing, Insulation
18	58432*	1	Screw, Terminal	35	5179	2	Screw, 10-32 x .50 Rd. Hd. St.
19	78337	2	Screw, 10-32 x 3/4 Pan Hd.	36	73547*	2	Bushing, Insulation
20	2434	2	Lockwasher, No. 10	37	57597	1	"O" Ring
21	2385	2	Washer, Guard	38	71098*	1	S.R.E. Housing & "O" Ring Assy.

NOTE 1: Clamp Ref. No. 24 is not required to install Ref. No. 25 (#96545).

\*Suggested Service Parts

© 1994 Prestolite Electric Incorporated

"Common Parts" Continued

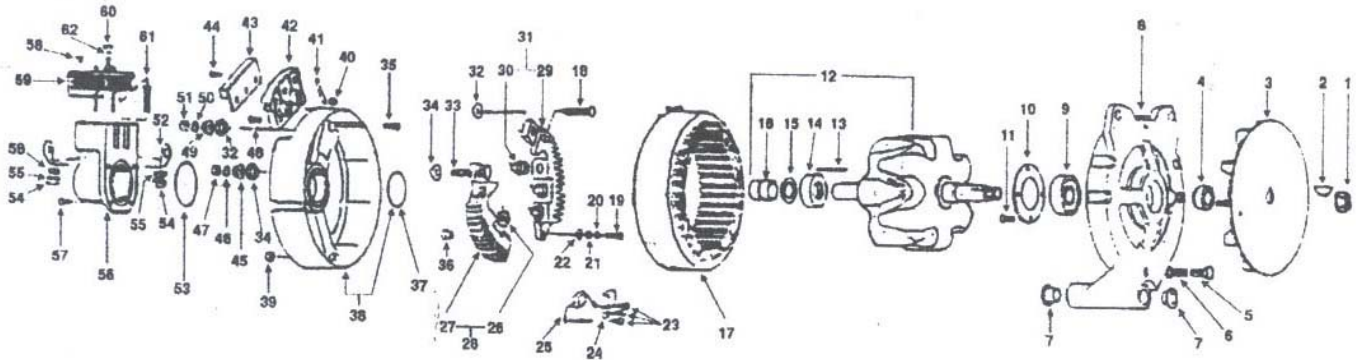
Important: The information contained in this bulletin is intended for use by trained, professional technicians who have the proper tools, equipment, and training to perform the required maintenance described above. This information is NOT intended for 'do-it-yourselfers', and you should not assume that this information applies to your equipment. If you have any questions regarding this information please visit our website at [www.prestolite.com](http://www.prestolite.com), or contact our customer service department at:

Leece-Neville Heavy Duty Systems  
7585 Empire Drive  
Florence, KY 41042

(800) 354-0560  
(859) 525-8801  
[info@prestolite.com](mailto:info@prestolite.com)

Group R-1 Continued

GROUP: "R-1"  
FORM: 3425-1071



**Parts Common**

Ref. No.	Part No.	Qty.	Description	Ref. No.	Part No.	Qty.	Description
39	26175	3	Nut, 10-32 Elastic Stop	52	78705*	1	Jumper
40	31587	3	Nut, Lock	53	57611	1	Ring, Sealing
41	73657	3	Jumper Assembly	54	5622	2	Nut, 6-32 Hex. Hd. Br.
42	73635	1	Insulator	55	13676	2	Lockwasher, No. 6 S'proof
43	79026	1	Diode Trio	56	78524	1	Brush Holder Housing
44	79088	3	Screw, 10-32 x .38 Rd. Hd. St.	57	13622	4	Screw, 8-32 x .44 Rd. Hd. St.
45	73009	1	Nut, 5/16-18 Tenz	58	78706	1	Jumper
46	3231	1	Lockwasher, 5/16	59	77973*	1	Regulator Assembly
47	2364	1	Nut, 5/16-18 Hex. St.	60	4340	1	Nut, 10-24 Hex. St.
48	73659	3	Screw, 10-32 x .50 Sq. Hd. St.	61	97893	2	Brush Assembly
49	59982	1	Nut, 1/4-20 Tenz	62	4534	1	Lockwasher, No. 10
50	2523	1	Lockwasher, 1/4	63	97287	1	Plastic Screw
51	2771	1	Nut, 1/4-20 Hex. St.				

\*Suggested Service Parts